

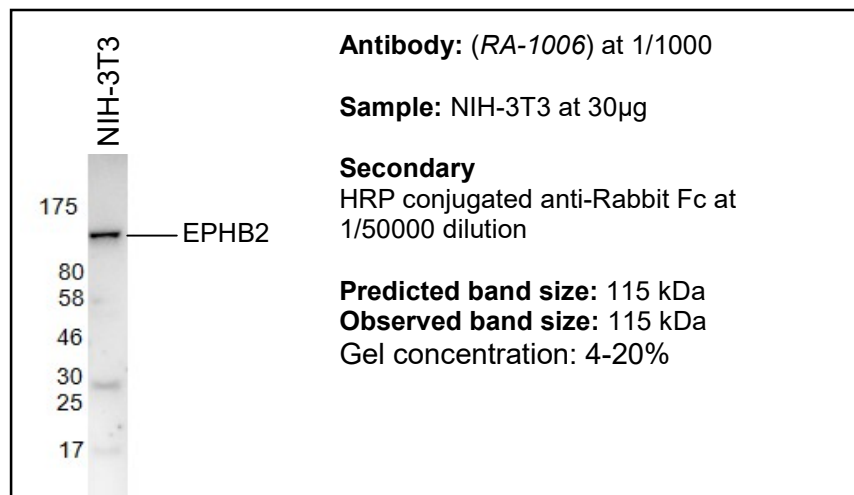
Recombinant Rabbit Anti-EPHB2 Antibody

Cat. No: RA-1006

PRODUCT INFORMATION

Product Name	Recombinant Rabbit Monoclonal Antibody for EPHB2
Gene ID	2048
UniProt ID	P29323
Target	Human EPHB2
Immunogen	Synthetic peptides derived from human EPHB2 (FLEDDTSDPTYTSALGGK)
Species Reactivity	Human and mouse (also recommended for detection of EPHB2 in rat, cow and sheep)
Type	Recombinant Monoclonal Rabbit IgG / light chain kappa
Clone	A1
Expression Host	HEK293F
Purification	Protein A purified
Affinity	0.23×10^{-9} M
Modification	None
Applications	WB, dilution (1:1000 – 1: 5000). Optimal dilutions /concentrations should be determined by the end user
Format	49% PBS, 50% Glycerol, 0.05% BSA, pH 7.2, 0.02% NaN ₃
Storage	Store at 4°C for up to 6 months. Store at -20°C long term.

DATA (Western blot)



AvantGen, Inc., 10151 Pacific Mesa Blvd., Ste 103, San Diego, CA 92121;
Tel: 858-768-8107; Fax: 858-587-6692; www.avantgen.com

"FOR RESEARCH USE ONLY AND ARE NOT INTENDED FOR DIAGNOSTIC OR THERAPEUTIC USE"