

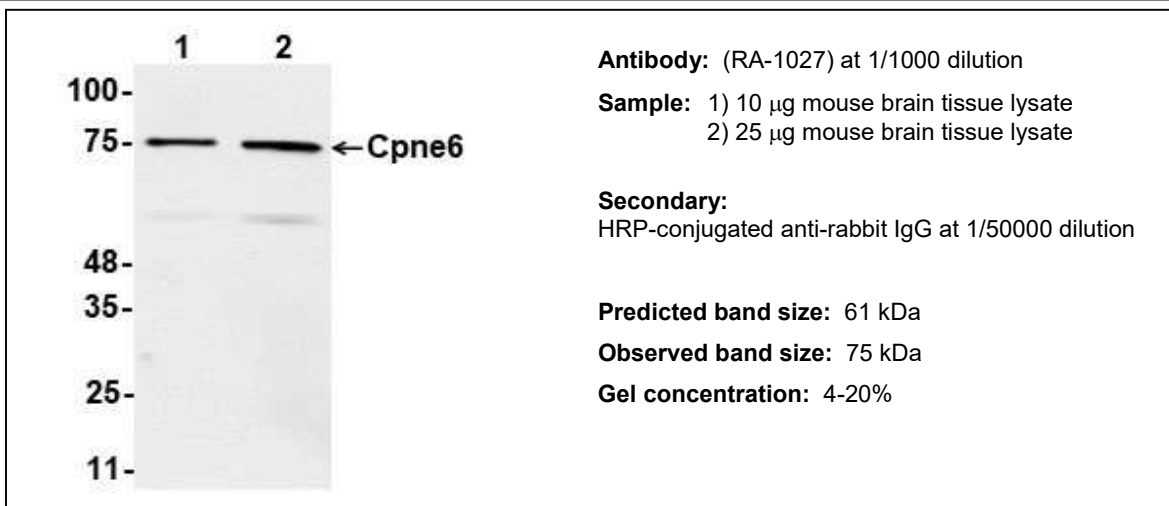
## Recombinant Anti-Cpne6 Antibody

Cat. No: RA-1027

### PRODUCT INFORMATION

<b>Product Name</b>	Recombinant Rabbit Monoclonal Antibody for Mouse Cpne6
<b>Gene ID</b>	12891
<b>UniProt ID</b>	Q9Z140
<b>Target</b>	Copine 6
<b>Immunogen</b>	Synthetic peptide derived from mouse Cpne6 (CRVAEPAQREQSTGQ)
<b>Species Reactivity</b>	Human, mouse
<b>Type</b>	Recombinant Rabbit IgG
<b>Clone</b>	C1
<b>Expression Host</b>	ExpiCHO
<b>Purification</b>	Protein A purified
<b>Affinity</b>	0.033 x 10 <sup>-9</sup> M
<b>Modification</b>	None
<b>Applications</b>	WB, dilution (1:1000–1:5000). Optimal dilutions / concentrations should be determined by the end user.
<b>Format</b>	PBS, pH 7.2, 0.02% NaN <sub>3</sub>
<b>Storage</b>	Store at 4°C for up to 6 months. Store at -20°C long term.

### DATA (Western blot)



AvantGen, Inc., 10151 Pacific Mesa Blvd., Ste 103, San Diego, CA 92121;  
Tel: 858-768-8107; Fax: 858-587-6692; [www.avantgen.com](http://www.avantgen.com)

"FOR RESEARCH AND DIAGNOSTIC USE ONLY AND ARE NOT INTENDED FOR THERAPEUTIC USE"