

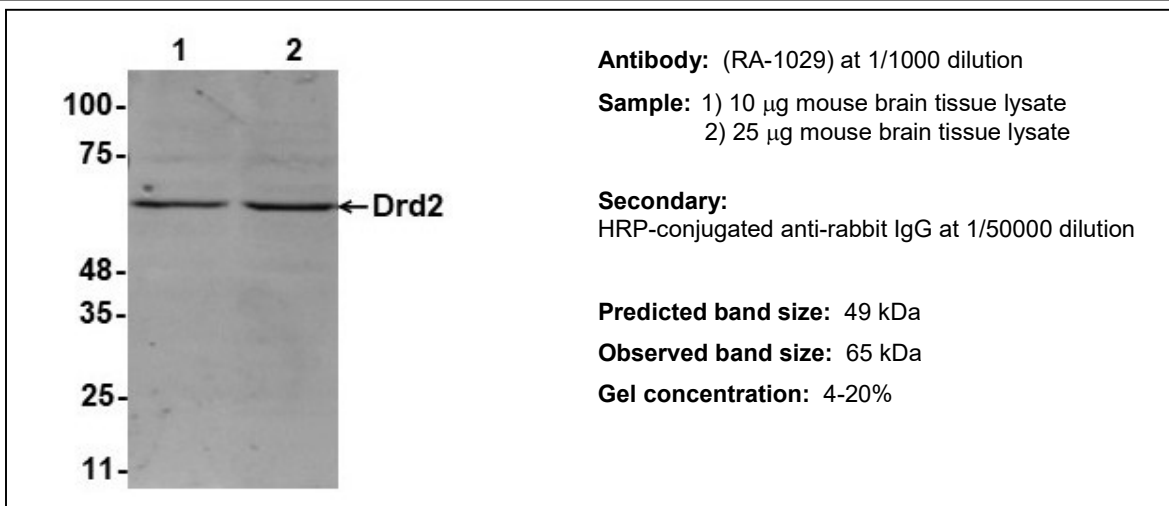
Recombinant Anti-Drd2 Antibody

Cat. No: RA-1029

PRODUCT INFORMATION

Product Name	Recombinant Rabbit Monoclonal Antibody for Mouse Drd2
Gene ID	13489
UniProt ID	P61168
Target	D2 Dopamine Receptor
Immunogen	Synthetic peptide derived from mouse Drd2 (FGLNNTDQNEC)
Species Reactivity	Human, mouse
Type	Recombinant Rabbit IgG
Clone	B7
Expression Host	ExpiCHO
Purification	Protein A purified
Affinity	0.28 x 10 ⁻⁹ M
Modification	None
Applications	WB, dilution (1:1000–1:5000). Optimal dilutions / concentrations should be determined by the end user.
Format	PBS, pH 7.2, 0.02% NaN ₃
Storage	Store at 4°C for up to 6 months. Store at -20°C long term.

DATA (Western blot)



AvantGen, Inc., 6162 Nancy Ridge Dr., Ste 150, San Diego, CA 92121;
Tel: 858-381-5214; Fax: 858-587-6692; www.avantgen.com

"FOR RESEARCH AND DIAGNOSTIC USE ONLY AND ARE NOT INTENDED FOR THERAPEUTIC USE"